



Presto 2.5

Magic Queue Admin Guide

Table of Contents

Overview	3
Installation	4
Setup	5

Overview

Magic Queue is a zero configuration, pull printing solution for Presto.

Supported Systems

- Windows: 7 +
- Mac OS X: 10.12 +

Installation

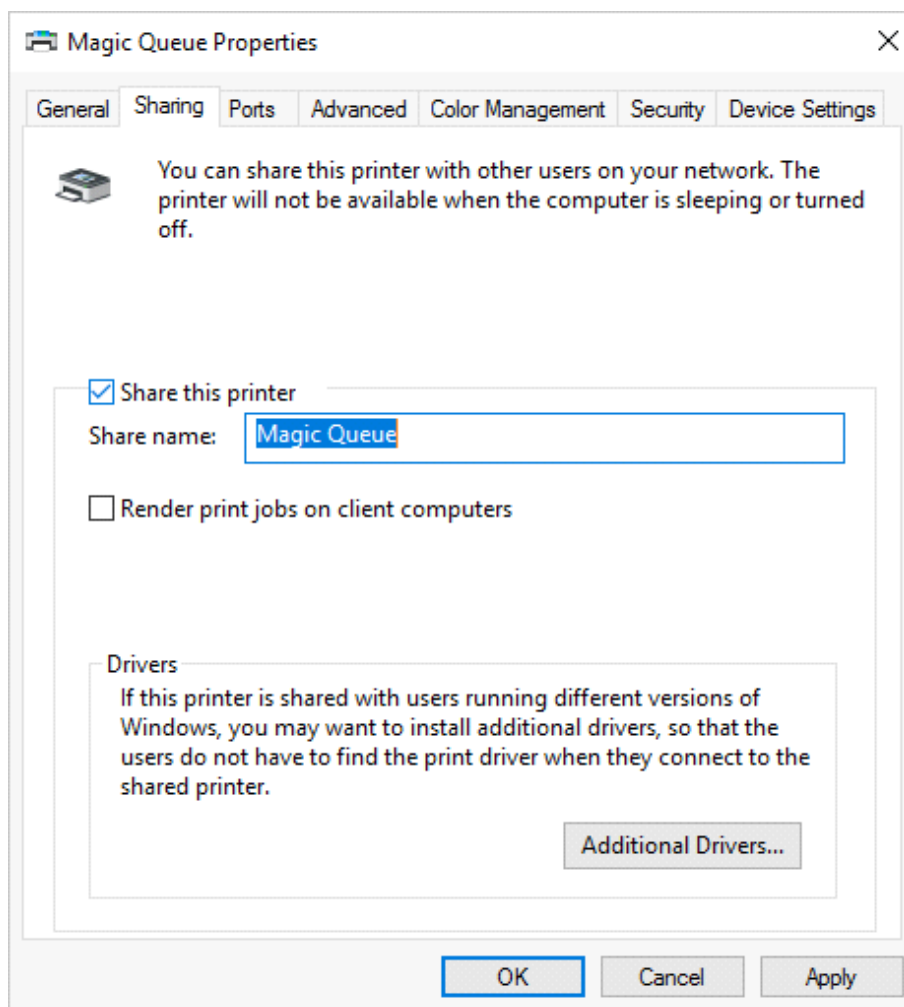
Magic Queue is installed automatically when installing Presto Server on Window and Mac OS X.

Setup

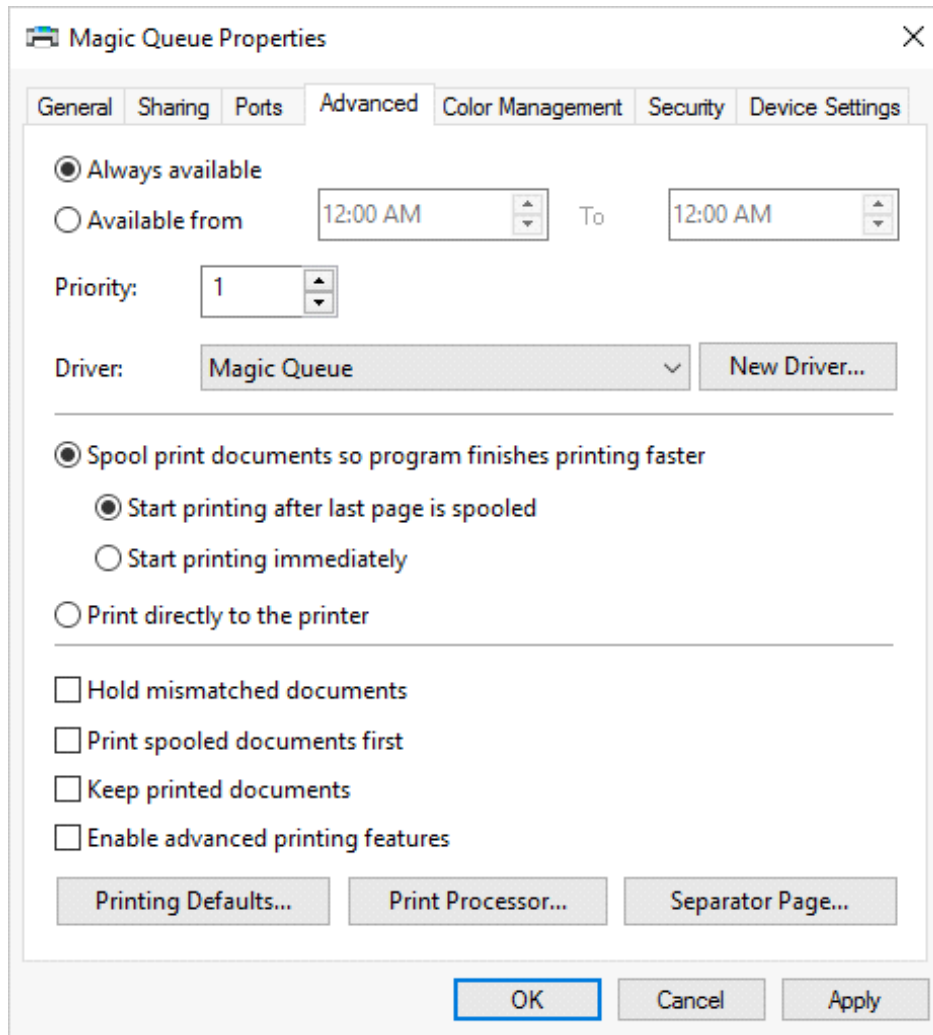
Magic Queue can be shared to allow users to print from their PCs to Presto. Any job printed to Magic Queue will be held for that user for 24 hours. Users can release held jobs by using the Presto app for iOS, Android, ChromeOS, or Windows. Alternatively, users can release held jobs by logging into Presto Station.

Windows

Magic Queue should be shared by Windows using the following configuration.



Be sure that the *Render print job on client computers* is not selected.



Be sure that *Enable advanced printer features* is not selected.

Mac OS X

No extra configuration is necessary to share Magic Queue correctly.